

Key SOFT LANDSCAPE

PB 95 TREE  
Refer to Schedule below

Blueberry 'Blast'

Current 'Red'

Feijoa 'Unique' (Hedge)

Lavender 'Hidcote'

Myrtus ugni (Hedge)

Rosmarinus Chefs Choice

Thymus 'Lemon'

Edible Mix - Sage, Strawberry, Lavender

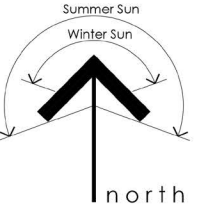
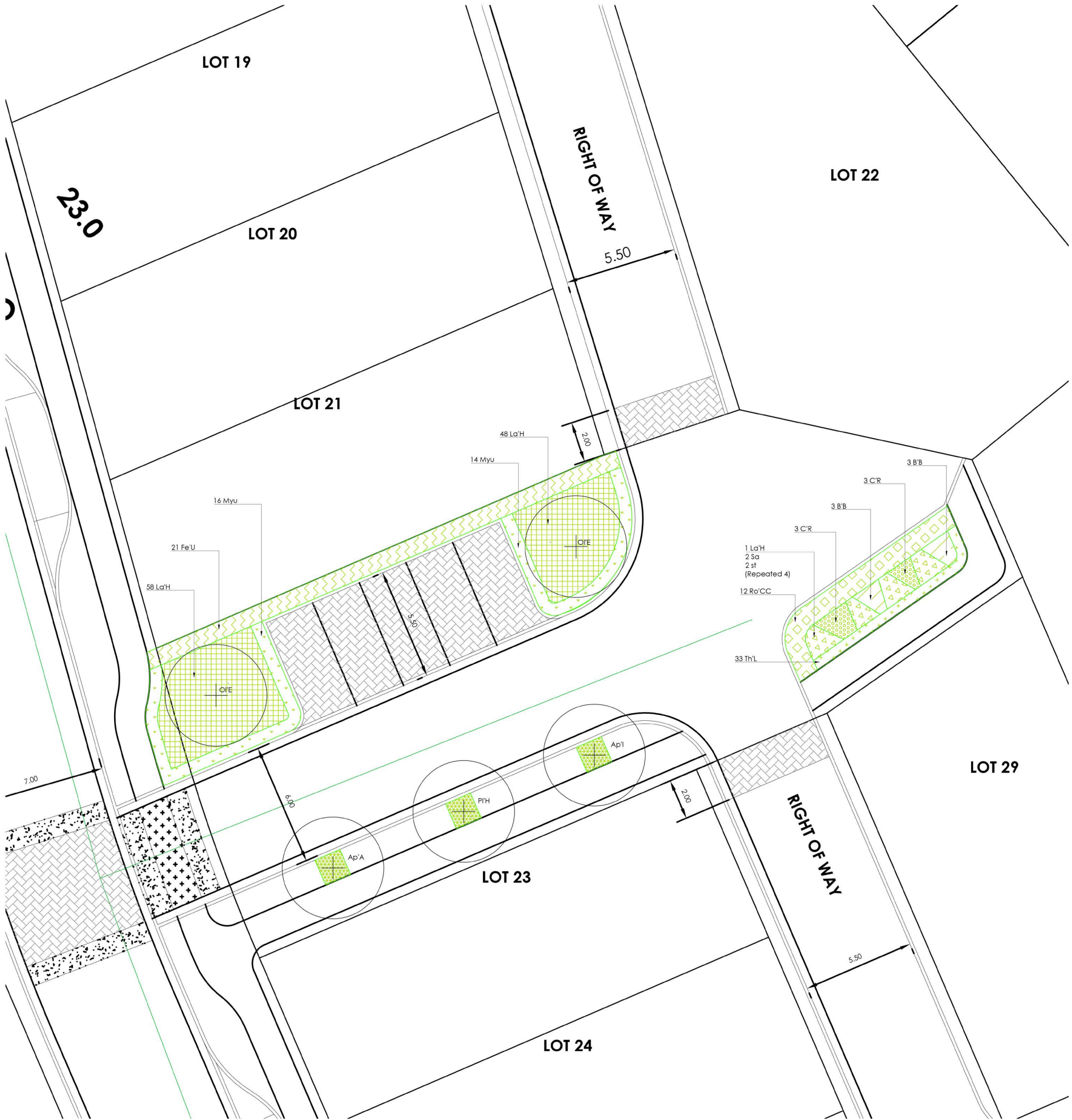
Mulch: Mulch with 25-55mm, 100mm deep decomposed tree chip mulch.

PLANT SCHEDULE

PLANTING	Qty.	Bag Size	Spacing (m)
Blueberry 'Blast'	6	PBS	1.00
Current Red	6	PBS	1.00
Feijoa 'Unique'	21	PBS	1.00
Lavender 'Hidcote'	105	PBS	0.70
Myrtus ugni	30	PBS	0.80
Rosmarinus Chefs Choice	12	PBS	1.00
Strawberry	8	PBS	0.30
Sage	8	PBS	0.30
Thymus Lemon	33	PBS	0.40
Total Plants	229		
TREE SPECIES	Qty.	Bag Size	Spacing (m)
Apple 'Ariane M9'	1	Pb95	As Shown
Apple 'Initial MM106'	1	Pb95	As Shown
Olea Europea	2	Pb95	As Shown
Plum 'Hawera'	1	Pb95	As Shown
Total Trees	5		

Notes

- Prior to planting, the contractor is to arrange a site visit with the landscape architect to confirm that the topsoil and plant stock is of the grade and quality specified and the sub-base is clean and friable.
- Read all plans in conjunction with the Standard Specification for Landscape Works.
- Read all plans in conjunction with the Architectural plans.
- Tree pits, planting and staking shall be in accordance with the CSS 2014 Part7
- Plant setout and other inspections are to be arranged as per the technical specification - note that locations of all trees on this plan are to be confirmed on site with the landscape architect.
- All tree pits shall be mulched to 100mm depth using a medium grade bark mulch (particles between 11-40mm diameter). The tree root crown should be level with the surrounding land and the mulch shall sit 25mm below surrounding land.
- The Contractor is responsible for relocating and confirming all existing services onsite prior to undertaking any works.



halswell commons

Stage 1A CUL DE SAC

Planting Plan

Job no: E1 6005

rough & milne landscape architects



General Notes  
This plan is for discussion purposes only, and should not be used for construction or legal purposes.

It is the contractors responsibility to confirm any discrepancies or ambiguities concerning the works prior to construction, and verify all levels, plan scale and set out information prior to commencing any work.  
This plan remains the property of Earthwork Landscape Architects. Unauthorised copying of this plan is prohibited without permission from Earthwork Landscape Architects.

Issue: PRELIMINARY FOR DISCUSSION

Revision Information		
Rev	Date	Issue
A	18-03-2016	Issue for Information
B	19-05-2016	Issue for Discussion
C	17-06-2016	Issue for Consent

Scale 1:100 @A1, 1:200 @ A3

Sheet No:

Designed: AB  
Drawn: OC

L03